



Desktop Station shield

Intoroduction rev.0

June 22, 2018

Desktop Station Products



DSair

DCC command station supported Wi-Fi with smartphones. Very small and compact.



DSshield

DSshield is DCC control board for Arduino UNO. PC and standalone is available.



DSmain

Large layout and PC automatic control system use. Our flag-ship command station.



DSbluebox

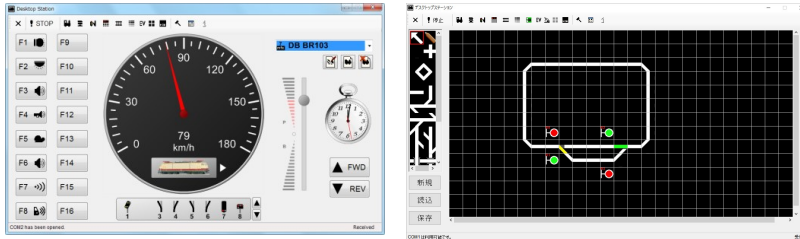
Command Station specialized for CV programming. Easy to use for CV read and write.



DSshield's concepts

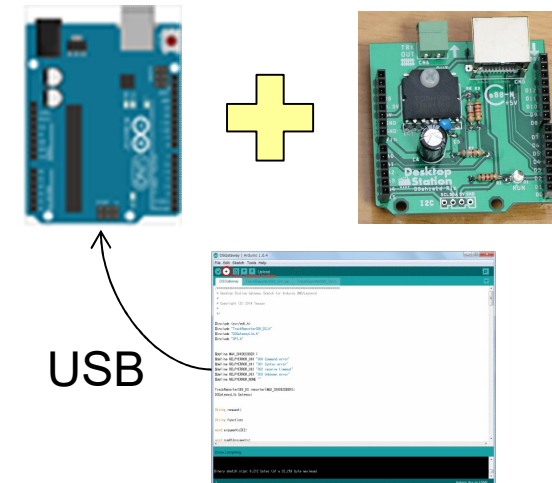


(1) PC control availability

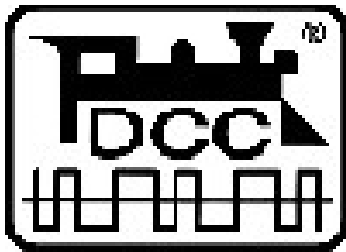


Our original PC software is freely available for our products!
Very simple and useful!

(2) Arduino based controller

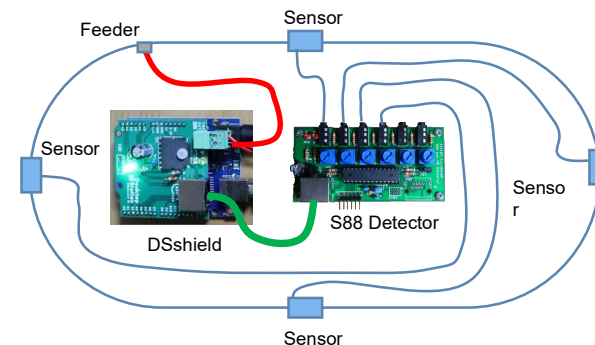


(3) Global Standard



Supported popular DCC locos and decoders. We have NMRA DCC Manufacture ID 140.

(4) Support S88-N

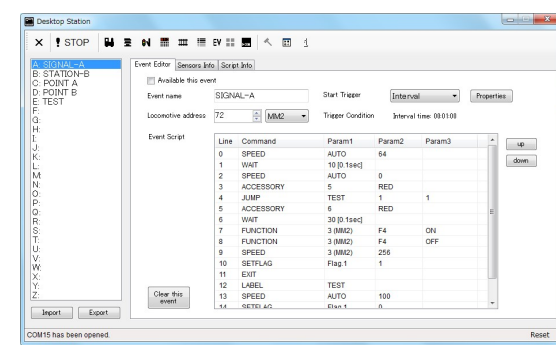
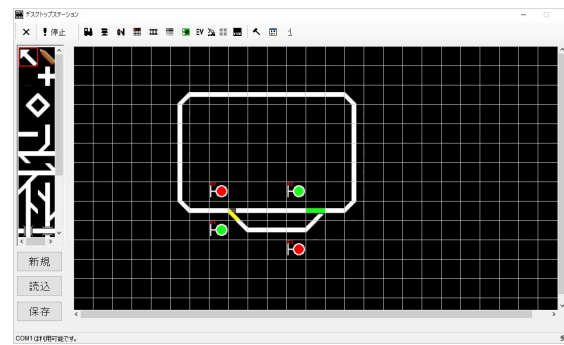
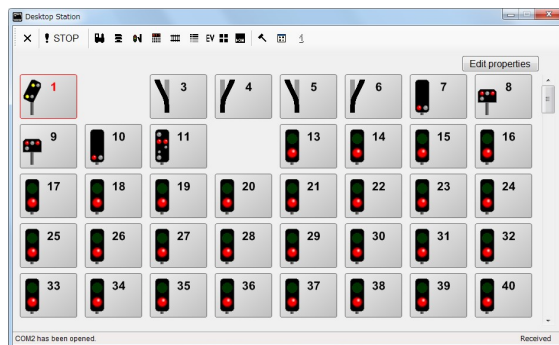
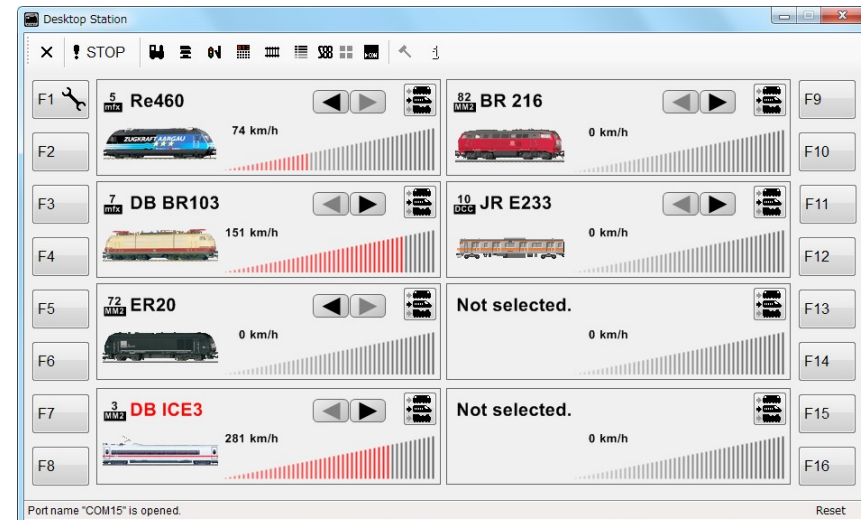


S88-N is a sensor network standard at EU

Desktop Station Software(DSS)



- We develop an original PC control software for our products. It's free of charge!

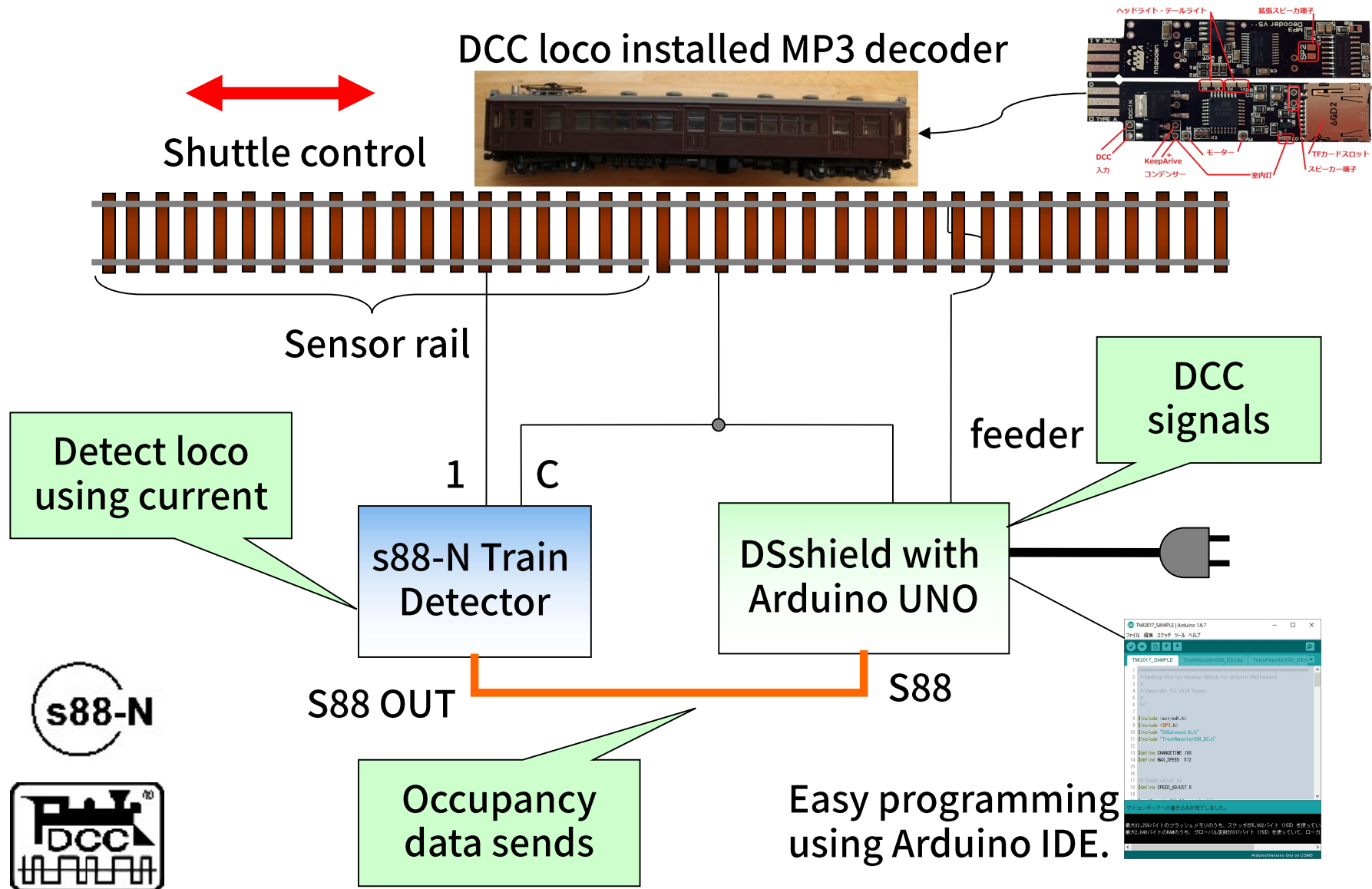


<https://desktopstation.net/download.html>

Usecase: Standalone control



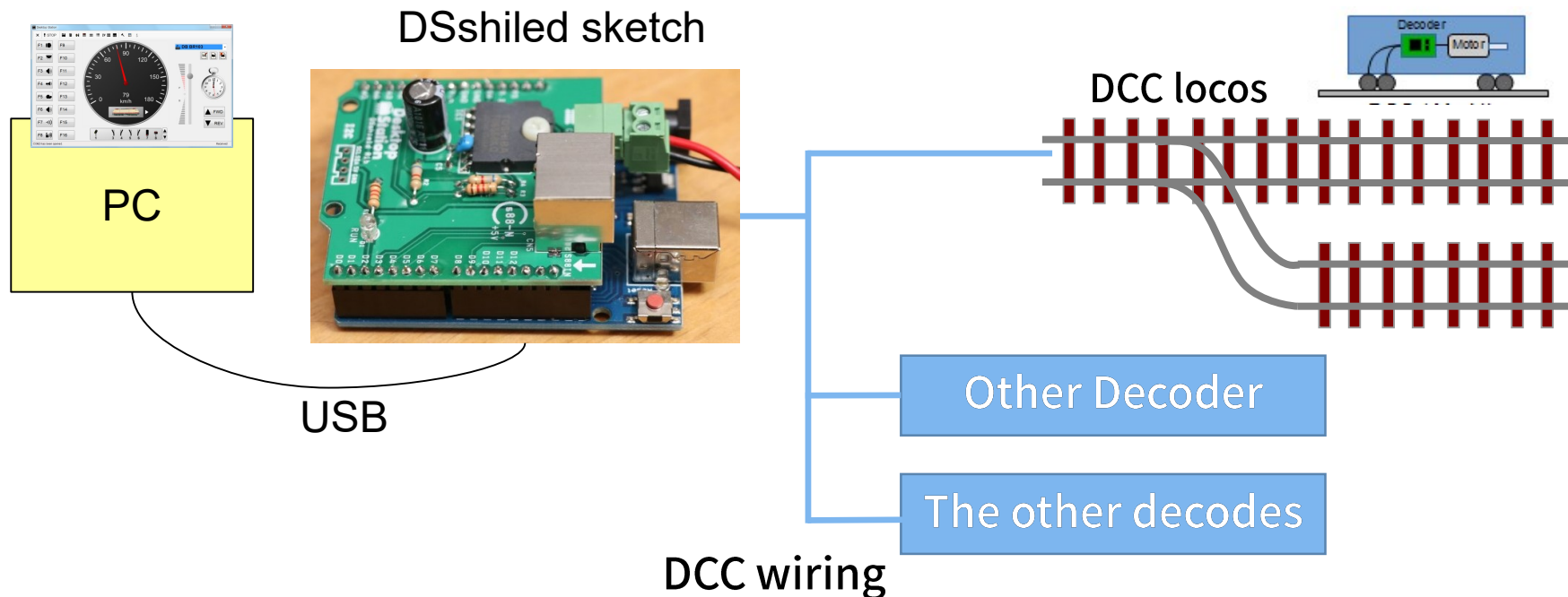
Arduino UNO + DSshield without PC controls DCC loco.



DSshield use case: with PC



- DSshield can be PC gateway for DCC control.
- Upload “DSshield” sketch at Arduino IDE.



We provide open source codes for upload to Arduino UNO.

Sketch name	Use case
DSshield	Gateway software for DSS.
DSshieldAUTO	Standalone control without PC.
DSshield with FlashAir	Standalone Wi-Fi controller. FlashAir W-04 and SD card shield is required.

Firmware link:

<https://desktopstation.net/wiki/doku.php/dsshield#%E3%82%B9%E3%82%B1%E3%83%83%E3%83%81%E3%83%95%E3%82%A1%E3%83%BC%E3%83%A0%E3%82%A6%E3%82%A7%E3%82%A2>



Expert DIY kits
Excl. Arduino UNO

25EUR

- Excl. DC power supply
- Excl. international shipping fee

Our products is now on sale at our web order page! International shipping is available!

<https://desktopstation.net/wiki/doku.php/dsshield>





<https://desktopstation.net/>